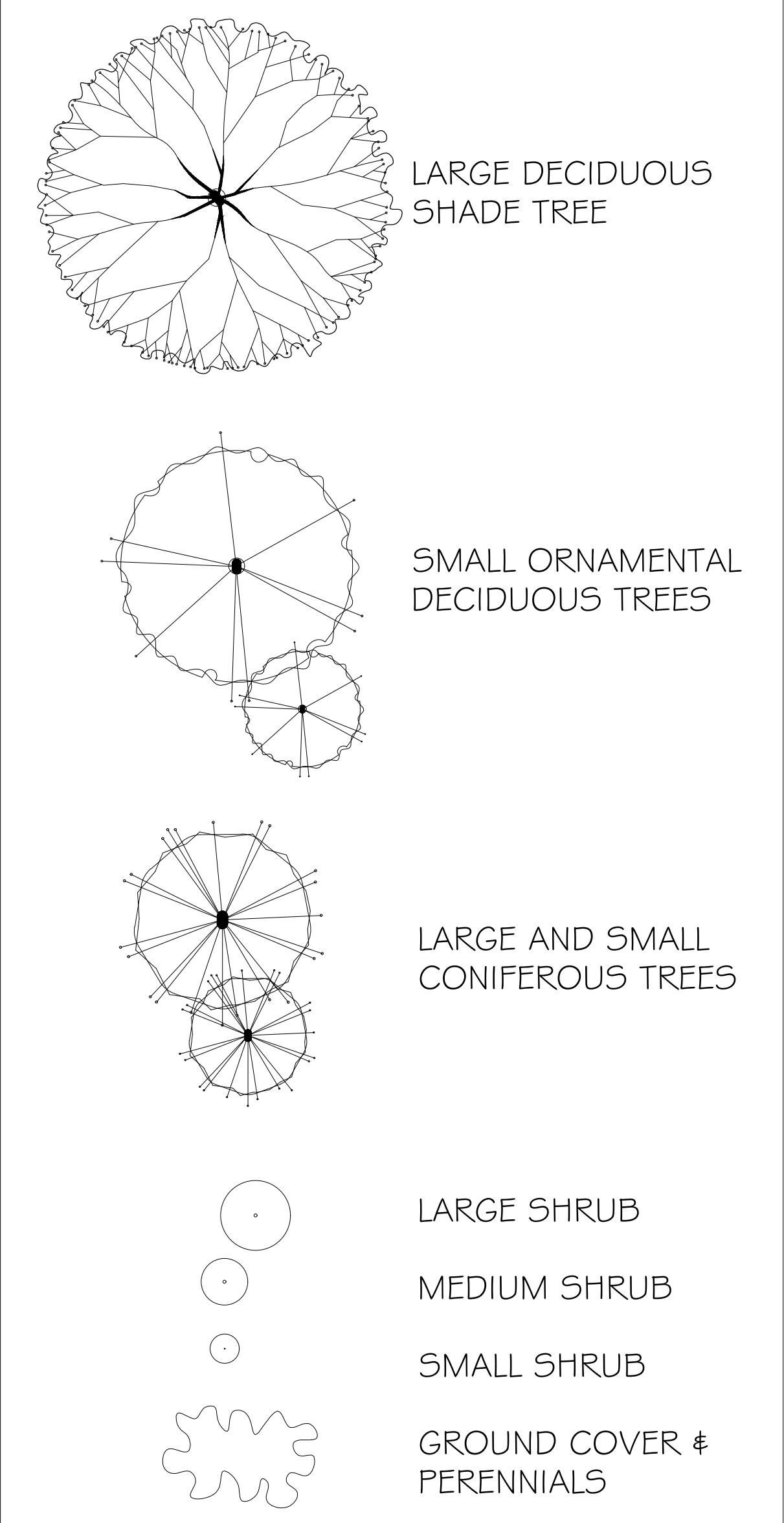


PLANTING LEGEND



SUGGESTED PLANT LIST				
Key	Common Name	Latin Name	Size	
Trees	VMAP	Vine Maple	Acer circinatum	2.5m Ht.
	CRAT	Lavalle's Hawthorn	Crataegus lavali	6cm Cal.
	GLED	Honeylocust	Gleditsia incanthos var. 'Shade Master'	7cm Cal.
Large Shrubs	LRHA	Rhododendron	Rhododendron var. 'Pink Wallop'	#7 Pot
	MAH	Oregon Grape	Mahonia aquifolium	#7 Pot
Medium Shrubs	MRHA	Rhododendron	Rhododendron var. 'Unique'	#5 Pot
	VACC	Evergreen Huckleberry	Vaccinium cereum	#5 Pot
	BAR	Dwarf Purple Barberry	Berberis thunbergii autropurpureum var. 'Rosy Glow'	#5 Pot
	ALAT	Winged Burning Bush	Euonymus alata	#5 Pot
Small Shrubs	SIFR	Gold Flame Spirea	Spiraea humilis var. 'Gold Flame'	#1 Pot
	DWMP	Dwarf Mugo Pine	Pinus mugo var. 'Pumilo'	#2 Pot
	DWPJ	Dwarf Lily of the Valley Shrub	Pieris japonica var. 'Debutante'	#1 Pot
	POLY	Sword Fern	Polystichum munum	#1 Pot
	EUCF	Creeping Euonymus	Euonymus fortunei var. 'Emerald Gauty'	#1 Pot
	BOIX	Korean Boxwood	Buxus sempervirens var. 'Winter Gem'	#2 Pot
	AZAP	Evergreen Azalea	Azalea japonica var. 'Gumpo Pink'	#2 Pot
Ground	BEAR	Bearberry	Arctostaphylos uva-ursi var. 'Vancouver Jade'	SP4
	BERG	Heartleaf Bergenia	Bergenia cordifolia var. 'Dressington Ruby'	SP5
Vines	VIRG	Self-clinging Virginia Creeper	Parthenocissus aquifolia var. 'Englemanni'	#5 Pot
Perennials	CARX	Vanesated Sedum	Carex microves var. 'Aureo-vanesata'	#1 Pot
	KARL	Feather Reed Grass	Calamagrostis acutifolia var. 'Karl Foerster'	SP5
Grasses	LAVA	English Lavender	Lavandula angustifolia var. 'Hidcot'	SP5
	TEST	Flame Sedum	Carex Testacea	#1 Pot

Notes: - All landscape work to conform with B.C.S.L.A. / B.C.N.T.A. standard specification.
- All areas to be irrigated with an automatic underground system.



THE DRAWINGS, DESIGN IDEAS AND FEATURES OF CONSTRUCTION DEPICTED HEREIN ARE THE EXCLUSIVE PROPERTY OF FORSITE LANDSCAPE ARCHITECTURE. ALL COMMON-COPY AND PROPERTY RIGHTS ARE EXPRESSLY RESERVED. THEY ARE NOT TO BE REPRODUCED, COPIED, REPRODUCED, OR USED FOR ANY PURPOSES NOR ARE THEY TO BE ASSIGNED TO A THIRD PARTY WITHOUT EXPRESSED WRITTEN CONSENT. IN THE EVENT OF ANY UNAUTHORIZED USE OF THESE PLANS BY A THIRD PARTY, THE THIRD PARTY SHALL NOT HOLD FORSITE LANDSCAPE ARCHITECTURE RESPONSIBLE.

ARCH. STAMP

231 FRASER STEET
NANAIMO, BC

CLIENT

REV. DATE	NUMBER	DESCRIPTION
22-08-29	1	LANDSCAPE CONCEPT PLAN FOR REVIEW
22-09-08	1	LANDSCAPE CONCEPT PLAN - REV.

DATE: SEPTEMBER 8, 2022
SCALE: 3/8" = 1'-0"
RECEIVED
DP1309
2023-MAY-23
COURTESY OF
DRAWN BY: BF/RF

LANDSCAPE CONCEPT PLAN

L100